

KF-FSB-6.4-4

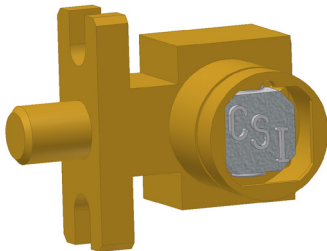
The KF Lock is a key operated mechanical bolt interlock for the control of electrical switchgear. The standard unit comes with a 16 mm diameter bolt of variable length, that is used to control the rotation or movement of operating handles or toggles of electrical switchgear. The KF interlock comes equipped with a flange to allow for different sorts of mounting. This lock is manufactured in brass or stainless steel making it ideal for use in harsh or corrosive environments.

### Operation

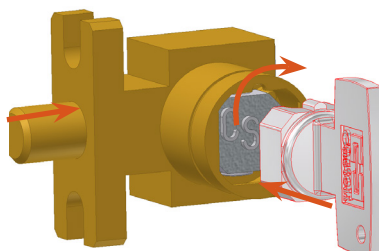
The Castell KF bolt interlock range is used in switchgear control to inhibit movement of cams, toggles or levers.

#### KF bolt interlock, Form 4

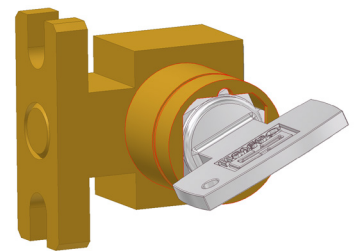
① Key is free, bolt is extended



② Insert and turn key to drive bolt



③ Key is trapped, bolt is retracted



1. While the side bolt is extended, the key is free. The mechanism is locked.
2. By inserting and turning the key in the bolt interlock, you can retract the bolt, e. g., releasing the disconnecter. This will trap the key into the lock.
3. The key stays trapped while the bolt is retracted.

The length of the bolt is available in various lengths to suit the application, but the travel of the bolt is always 19,05 mm. The key is free when the bolt is extended. Insertion and rotation clockwise of the key will retract the bolt. The key will be trapped in the bolt retracted position.

## Usage

The KF bolt interlocks are used as a part of a safety system to allow safe control of valves or disconnect switches.



The KF bolt interlock is not designed for security purposes, such as a safe or external access to a building. The KF bolt interlock is not designed to interlock access gates or doors. Please refer to AI access interlocks.

No hazardous substances were used in the manufacture of this product. The product can be disposed of in standard waste.

## Installation

The housing of the KF bolt interlock should normally be mounted to a panel using suitable fasteners. Please refer to drawing on page 4 for more installation details.



**IMPORTANT:**

The interlock should be mounted using anti-tamper fasteners to prevent unauthorised removal.



The KF bolt interlock must be installed by a competent and qualified person who has read and understood these instructions. Please retain this document in your technical file.

Force required to shear lock bolt is 30KN for stainless steel and 19KN for brass interlocks.

## Maintenance

Periodic visual checks should be carried out by the site manager / safety officer.  
Do not lubricate lock barrel with oil or grease, use CK Dry Powder Graphite if necessary.



In case of defects being detected please contact your nearest Castell Support Department for further actions. Please see Contact section for contact details.

### Technical Data

<b>Temperature rating</b>	Minimum: -40°C [-40°F] ice free for Q & FS Type
	Maximum: 107°C [224,6°F] for Q Type/140°C [284°F] for FS Type
<b>Type of mounting</b>	Surface mount using suitable fasteners (please refer to drawing on page 4 for more details)
<b>Weight</b>	Brass: 0,7 kg
	Stainless steel: 0,7 kg
<b>Material</b>	Brass/Stainless steel
<b>MTTF Certification</b>	Available on request

### Application

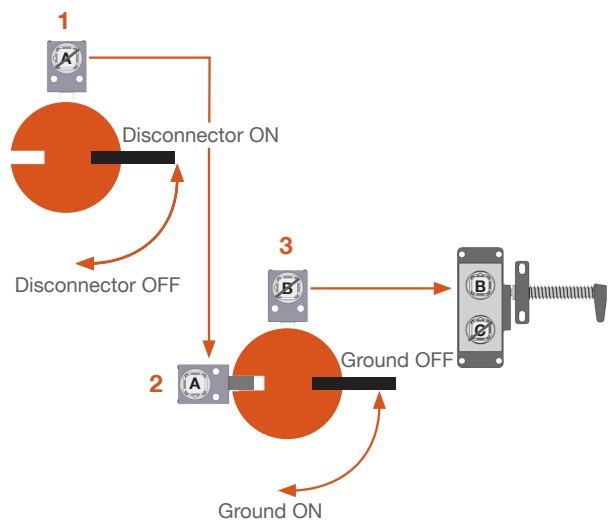
The KF bolt interlocks are used as a part of a safety system to allow safe control of valves or disconnect switches.

While power supply to the system is switched on, the access doors to the hazardous area are locked closed. Key A is trapped in the disconnecter KF bolt interlock (1) while the process is on.

To enter the hazardous area, the disconnecter is turned to the off position and key A is released, locking the disconnecter in the disengaged position.

Key A is then taken to the grounding switch. Key A enters the second KF lock (2) which retracts the bolt enabling the cammed switch lever to be rotated to engage the ground. Once rotated, the recess in the cam aligns with the next KF lock (3) with key B trapped in its lock. Key B can now be removed from KF lock (3), which now locks the lever in place ensuring that the ground connection cannot be broken.

The system is now disconnected and grounded, key B can be taken to operate the access interlock on the door of the hazardous area to gain access into it.



### EC-Declaration

We, the manufacturers, declare that the components, detailed herein and placed on the market, comply with all the essential health and safety requirements applying to them.

Empowered signatory:

Mr T.C. Whelan  
Managing Director

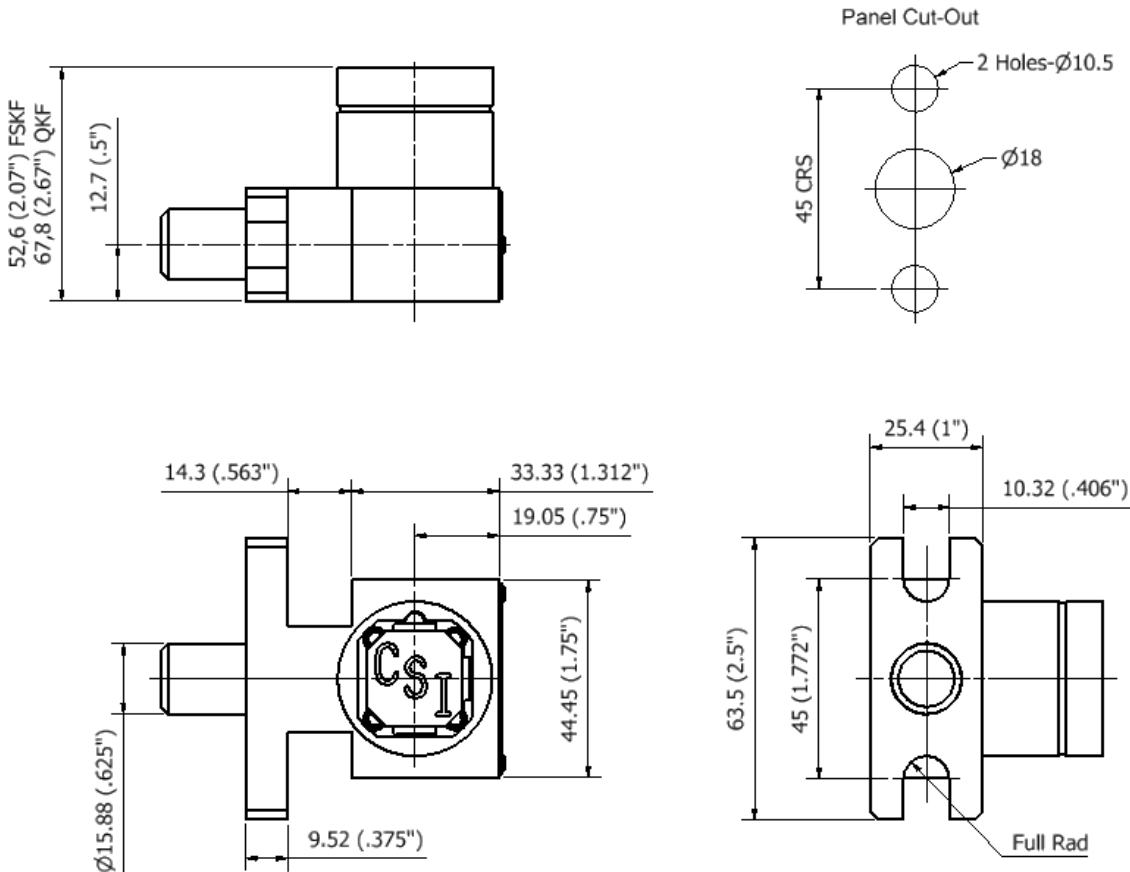


### Drawing

Dimensions:  
in mm

*Note: For safe mounting, use security screws*

KF, form 4



Mounting Holes:  
M8 (Brass)  
Ø8,35 (Stainless steel)  
Ø10,3 (US - Brass/Stainless Steel)

L Dimension Retracted bolt length (in mm)	Extended bolt length (in mm)
0	19,05
6,35	25,40
12,70	31,75
19,05	38,10
25,40	44,45

### Order Information

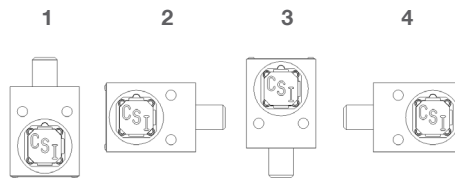
	<b>Product Type</b>	<b>1</b>	<b>2</b>	<b>3</b>	<b>4</b>
Part Number	KF				
Example	KF	FS	B	6,4	1
	<b>5</b>				
	ABC				

<b>1</b>	Lock portion type	FS <sup>(1)</sup> / Q <sup>(1)</sup>
<b>2</b>	Material	B = Brass / S = Stainless steel
<b>3</b>	L Dimension (bolt length when retracted) in mm	0 / 6,4 / 12,7 / 19,1 / 25,4
<b>4</b>	Form	1 / 2 / 3 / 4 <sup>(2)</sup>
<b>5</b>	Lock portion symbol	FS <sup>(1)</sup> up to 3 characters / Q <sup>(1)</sup> up to 6 characters

(1) **FS - Lock type** Up to 3 characters  
**Q - Lock type** Up to 6 characters




(2) **Form**



Special construction available upon enquiry

### Accessories

	Product	Part number
	Flip Cap	FLIP-S

### Contact Information

Castell Safety International Ltd.  
 The Castell Building  
 217 Kingsbury Road  
 London, England NW9 9PQ

t: +44 (0) 20 8200 1200  
 f: +44 (0) 20 8905 9378  
 e: [uksales@castell.com](mailto:uksales@castell.com)

Castell Safety International Ltd.  
 Oskar-Jäger-Strasse 137  
 50825 Köln  
 Germany

t: +49 (0) 221 1694 794  
 f: +49 (0) 221 1694 795  
 e: [vertrieb@castell.com](mailto:vertrieb@castell.com)

Castell Interlocks Inc.  
 Suite 800  
 150 N Michigan Avenue,  
 Chicago, Illinois 60601  
 USA

t: +1.312.360.1516  
 f: +1.312.268.5174  
 e: [ussales@castell.com](mailto:ussales@castell.com)

Castell Safety China  
 Building 1, No. 123,  
 Lane 1165, Jindu Road,  
 Minhang District,  
 Shanghai 201108, China.

t: +86 21 61519023  
 f: +86 21 61519030  
 e: [chinasales@castell.com](mailto:chinasales@castell.com)

While every effort has been made to ensure the accuracy of the information provided, no liability can be taken for any errors or omission. Castell Safety International Limited reserves the right to alter specifications and introduce improvements without prior notice.