

KLC-FSB (Form 4)

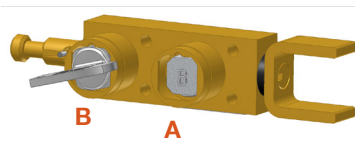
The KLC dual key claw interlock is a multi-key operated mechanical bolt interlock suitable for the control of electrical switchgear. The standard unit comes with a 16mm diameter bolt fitted with a claw that is used to control the rotation or movement of operating handles or toggles of electrical switchgear. The lock is manufactured in brass or stainless steel which is ideally suited to use in harsh or corrosive environments.

Operation

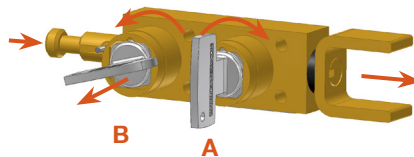
The Castell claw interlocks range is used in switchgear control to lock off power supply and control accesses to hazardous areas.

KLC dual key claw interlock, exchange key condition

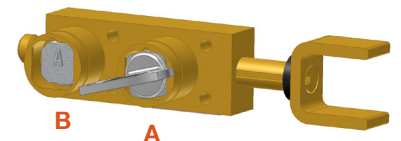
① Key A is free, key B is trapped and claw is retracted.



② Insert and turn key A and drive the bolt manually to extend the claw. Turn and release key B.



③ Key B is free, key A is trapped and the claw is locked in extended position.



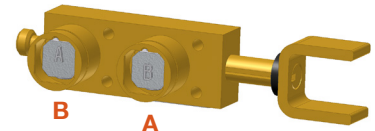
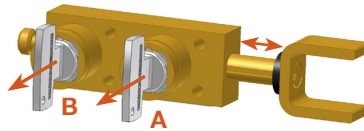
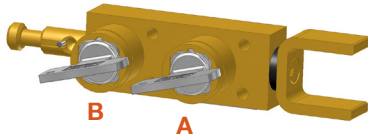
1. While key A is free, the claw is locked in retracted position, allowing the switch to turn or move.
2. By inserting and turning key A in the KLC claw interlock, you can unlock the claw and manually extend the bolt. The claw now constrains the switch in the off position. Releasing key B will lock the claw in the extended position and trap key A. The released key B can be used as personnel key to gain access to the hazardous area via an access interlock.
3. The switch cannot be switched on until key B is replaced in the KLC claw interlock, the bolt is retracted and key A released locking the claw in the retracted position.

The length of the bolt can be varied to suit the application but travel of the bolt is always 50,08 mm.

Operation

KLC dual key claw interlock, double key condition

- ① Keys A and B are trapped, the claw is retracted
- ② Drive the bolt to extend the claw. Turn and release key A and B to lock the claw in extended position.
- ③ Both keys are released and the claw is locked in extended position.



1. While both keys are trapped, the claw is locked in retracted position, unconstraining the switch.
2. Driving the bolt, the claw is extended. Turning and releasing both keys will lock the claw in extended position constraining the switch in the off position. The released keys can be used as personnel keys to gain access to the hazardous area via an access interlock.
3. The switch cannot be switched on until key A and B are replaced in the KLC claw interlock and the claw is retracted.

The length of the bolt can be varied to suit the application but travel of the bolt is always 50,08 mm.

Usage

The KLC dual key claw interlock is designed to be part of a safety system and is used to lock off switches which then allows to gain access to a hazardous area.



The KLC claw interlock is not designed for security purposes, such as external access to a building.

No hazardous substances were used in the manufacture of this product. The product can be disposed of in standard waste.

Installation

The housing of the KLC dual key claw interlock should normally be mounted to a panel using suitable fasteners (please refer to drawing on page 4 for more details)



IMPORTANT:

The interlock should be mounted using anti-tamper fasteners to prevent unauthorised removal.



The KLC claw interlock must be installed by a competent and qualified person who has read and understood these instructions. Please retain this document in your technical file.

Maintenance

Periodic visual checks should be carried out by the site manager / safety officer.
Do not lubricate lock barrel with oil or grease, use CK Dry Powder Graphite if necessary.



In case of defects being detected please contact your nearest Castell Support Department for further actions.
Please see Contact section for contact details.

Technical Data

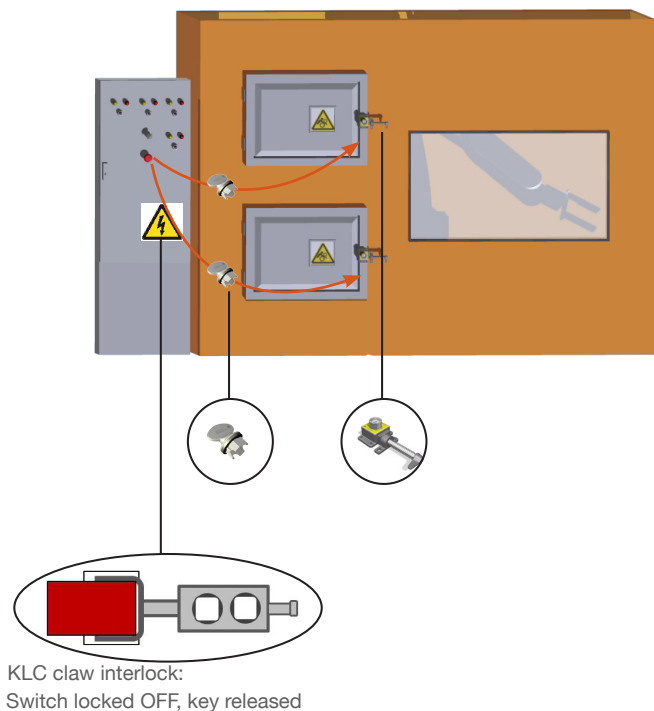
Temperature rating	Minimum: -40°C [-40°F] ice free for Q & FS Type
	Maximum: 107°C [224,6°F] for Q Type/140°C [284°F] for FS Type
Type of mounting	surface mount using suitable fasteners (please refer to drawing on page 4 for more details)
Weight	N/A
Material	Brass/Stainless steel
MTTF Certification	Available on request

Application

The Castell KLC claw interlock is used as a part of a safety system, typically in machine guarding applications. It is usually used in combination with an Access Interlock such as the Salus for part body access or an Access Interlock with an exchange key for full body access control.

While the power supply is switched on, both keys are trapped in the KLC claw interlock. To lock off the power supply switch, drive the bolt to extended position. The design has to be such that the bolt cannot be extended when the system is turned on. This will release the keys keeping the bolt extended and the switch locked off. The released keys are taken by the personnel to unlock the AI access interlocks on the HV cabinet. While the access doors are opened, the keys remain trapped in the AI locks.

The bolt of the KLC claw interlock cannot be retracted to unlock the power supply until both doors to the HV cabinet are locked, keys removed from AI access interlocks and the replaced into the KLC claw interlock.



EC-Declaration

We, the manufacturers, declare that the components, detailed herein and placed on the market, comply with all the essential health and safety requirements applying to them.

Empowered signatory:

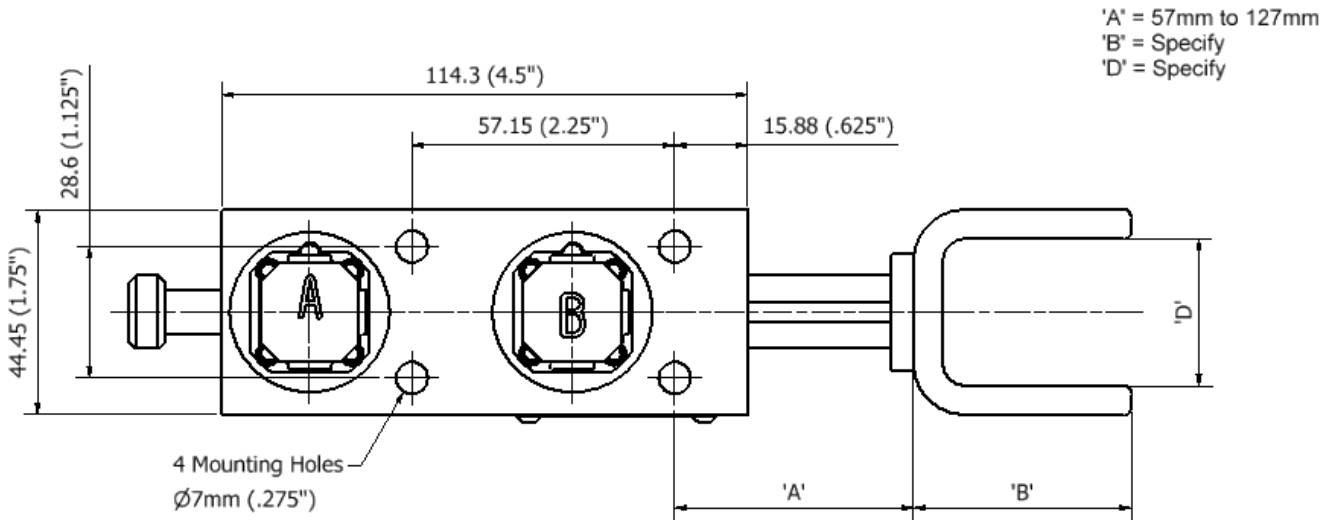
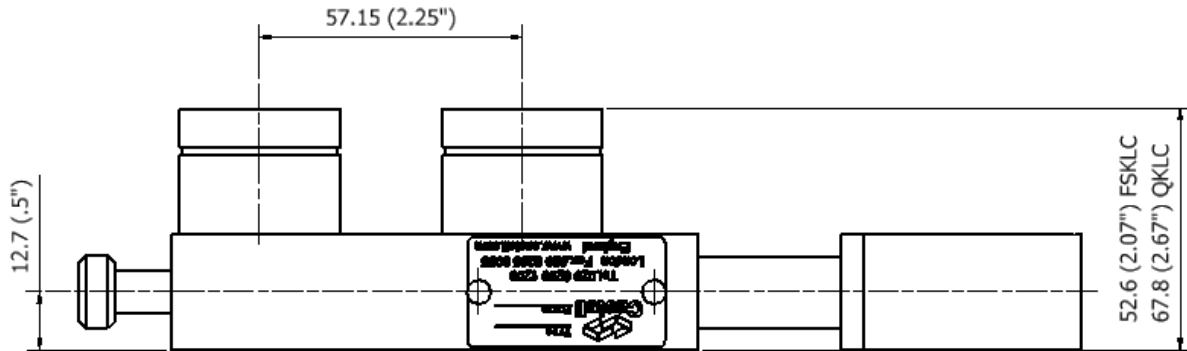
Mr T.C. Whelan
Managing Director



Drawing

Dimensions:
in mm

Note: For safe mounting, use security screws



Order Information

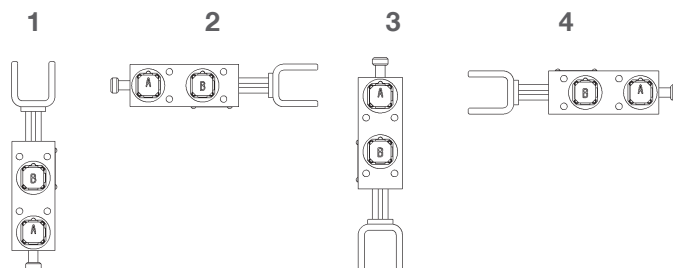
Part Number	Product Type	1	2	3
	KLC			
Example	KLC	FS	B	4
	4			
	19.1mm			
	5			
	60mm			
	6			
	28.9mm			
7	A	Isolation Key Symbol (exchange key condition)		
	OR			
		Primary Key Symbol (double key condition)		
8	B	Personnel Key Symbol (exchange key condition)		
	OR			
		Secondary Key Symbol (double key condition)		

1	Lock portion type	FS ⁽¹⁾ / Q ⁽¹⁾
2	Material	B = Brass / S = Stainless steel
3	Form	1 / 2 / 3 / 4 ⁽²⁾
4	A dimension (bolt travel)	please specify: from 57mm to 127mm
5	B dimension (see page 4 for claw details)	please specify
6	D dimension (see page 4 for claw details)	please specify
7	Lock portion symbol: Isolation key (for exchange key condition) Primary key (for double key condition, located next to the bolt)	FS ⁽¹⁾ up to 3 characters / Q ⁽¹⁾ up to 6 characters
8	Lock portion symbol: Personnel key (for exchange key condition) Secondary key (for double key condition - this key drives the bolt)	FS ⁽¹⁾ up to 3 characters / Q ⁽¹⁾ up to 6 characters

(1) **FS - Lock type** Up to 3 characters **Q - Lock type** Up to 6 characters



(2) **Form**



Special construction available upon enquiry

Contact Information

Castell Safety International Ltd.
The Castell Building
217 Kingsbury Road
London, England NW9 9PQ

t: +44 (0) 20 8200 1200
f: +44 (0) 20 8905 9378
e: uksales@castell.com

Castell Safety International Ltd.
Oskar-Jäger-Strasse 137
50825 Köln
Germany

t: +49 (0) 221 1694 794
f: +49 (0) 221 1694 795
e: vertrieb@castell.com

Castell Interlocks Inc.
Suite 800
150 N Michigan Avenue,
Chicago, Illinois 60601
USA

t: +1.312.360.1516
f: +1.312.268.5174
e: ussales@castell.com

Castell Safety China
Building 1, No. 123,
Lane 1165, Jindu Road,
Minhang District,
Shanghai 201108, China.

t: +86 21 61519023
f: +86 21 61519030
e: chinasales@castell.com

While every effort has been made to ensure the accuracy of the information provided, no liability can be taken for any errors or omission. Castell Safety International Limited reserves the right to alter specifications and introduce improvements without prior notice.