

KLE-QB-6.4-4

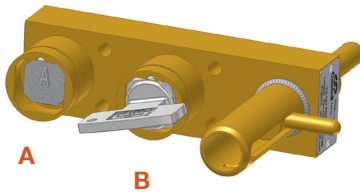
The KLE double key sliding door interlock is a one piece access interlock comprising of a main body and sliding bolt. The lock is designed to suit sliding doors of various sizes and thicknesses. The interlock is manufactured in brass and comes with the brass F (Figure) or Q style lock portions and is ideal for use in dry, non-corrosive environments where the lock is subject to medium to heavy use. Typical industries using the KLE lock are automotive and steel production. The KLE door interlock is available in a double key or exchange key condition.

### Operation

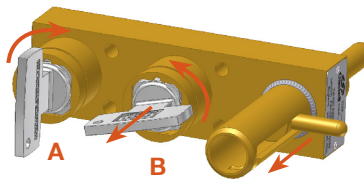
The Castell KLE sliding door interlock range is used in machine guarding applications control access to hazardous areas.

#### KLE bolt interlock, exchange key condition

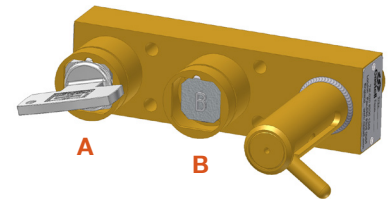
① Key A is free, while key B is trapped and bolt is extended.



② Insert and turn key A and then retract the bolt. Turn and release key B.



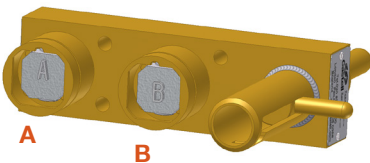
③ Key B is free, key A is trapped and bolt is retracted.



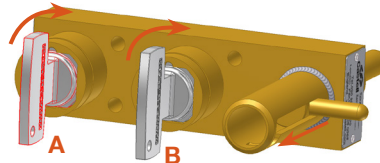
1. While the side bolt is extended and key B is trapped, key A is free. The door is locked closed.
2. Inserting and turning key A in the bolt interlock enables you to rotate key B, releasing the mechanism. This will trap key A into the lock. Key B can now be taken by the personnel to the machine area.
3. Key A stays trapped until the door is open and key B returned to the KLE sliding door interlock.

#### KLE bolt interlock, double key condition

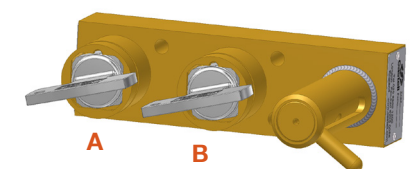
① Key A and key B are free, bolt is extended.



② Insert and turn both keys and then retract the bolt.



③ Both keys are trapped, bolt is retracted.



1. While the side bolt is extended, key A and B are free. The door is locked closed.
2. Inserting and turning the keys will allow the bolt to retract. The door can now be unlocked.
3. The keys stay trapped as long the door is opened and bolt is retracted.

The length of the bolt can be varied to suit the application but travel of the bolt is always 50,08 mm.

### Usage

The KLE sliding door lock should be used to allow safe control of sliding doors.



The KLE lock is not designed for security purposes, such as a safe or external access to a building.

No hazardous substances were used in the manufacture of this product. The product can be disposed of in standard waste.

### Installation

The housing of the KLE sliding door lock should normally be mounted to a panel using suitable fasteners (please refer to drawing on page 4 for more details).



**IMPORTANT:**

The interlock should be mounted using anti-tamper fasteners to prevent unauthorised removal.



The KLE sliding door lock must be installed by a competent and qualified person who has read and understood these instructions. Please retain this document in your technical file.

Force required to shear lock bolt is 19KN.

### Maintenance

Periodic visual checks should be carried out by the site manager / safety officer.  
Do not lubricate lock barrel with oil or grease, use CKLE Dry Powder Graphite if necessary.



In case of defects being detected please contact your nearest Castell Support Department for further actions.  
Please see Contact section for contact details.

### Technical Data

<b>Temperature rating</b>	Minimum: -40°C [-40°F] ice free for Q & FS Type
	Maximum: 107°C [224,6°F] for Q Type/140°C [284°F] for FS Type
<b>Type of mounting</b>	Surface mount using suitable fasteners (please refer to drawing on page 4 for more details)
<b>Weight</b>	Brass: 0,7 kg
<b>Material</b>	Brass
<b>MTTF Certification</b>	Available on request

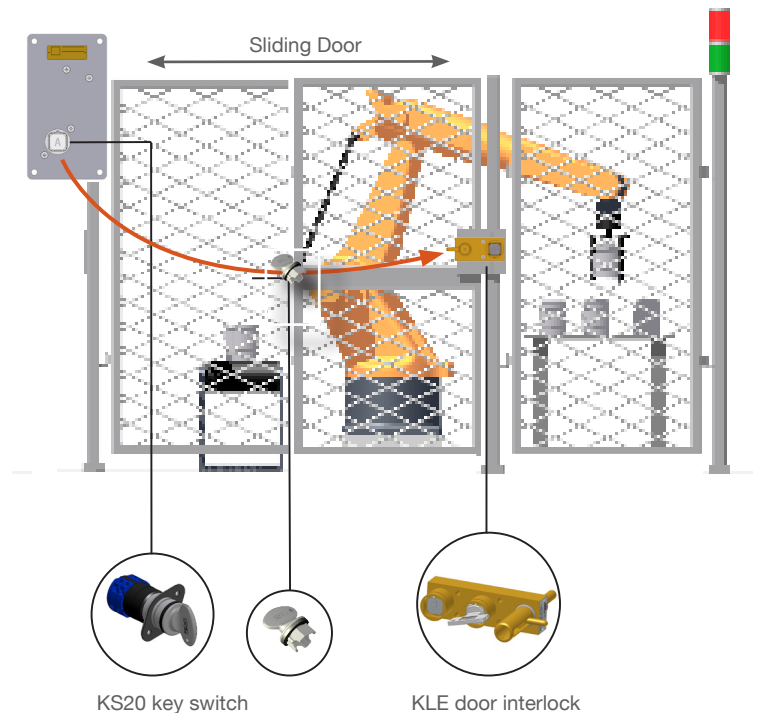
### Application

The KLE bolt interlocks are used as part of a safety system, typically in machine guarding applications.

The power supply to the system is switched on and the access door to the hazardous area is locked closed.

The removal of the isolation key in the KS20 unit, isolates the electrical supply to the LV Panel. The key is then used to unlock the KLE sliding door interlock on the sliding door. This will release the second key (key B), which can be taken by personnel into the machine area.

The power cannot be switched on until key B is returned to the access interlock, the door is closed, the bolt and key B are trapped in the KLE unit and key A returned to the KS20.



### EC-Declaration

We, the manufacturers, declare that the components, detailed herein and placed on the market, comply with all the essential health and safety requirements applying to them.

Empowered signatory:

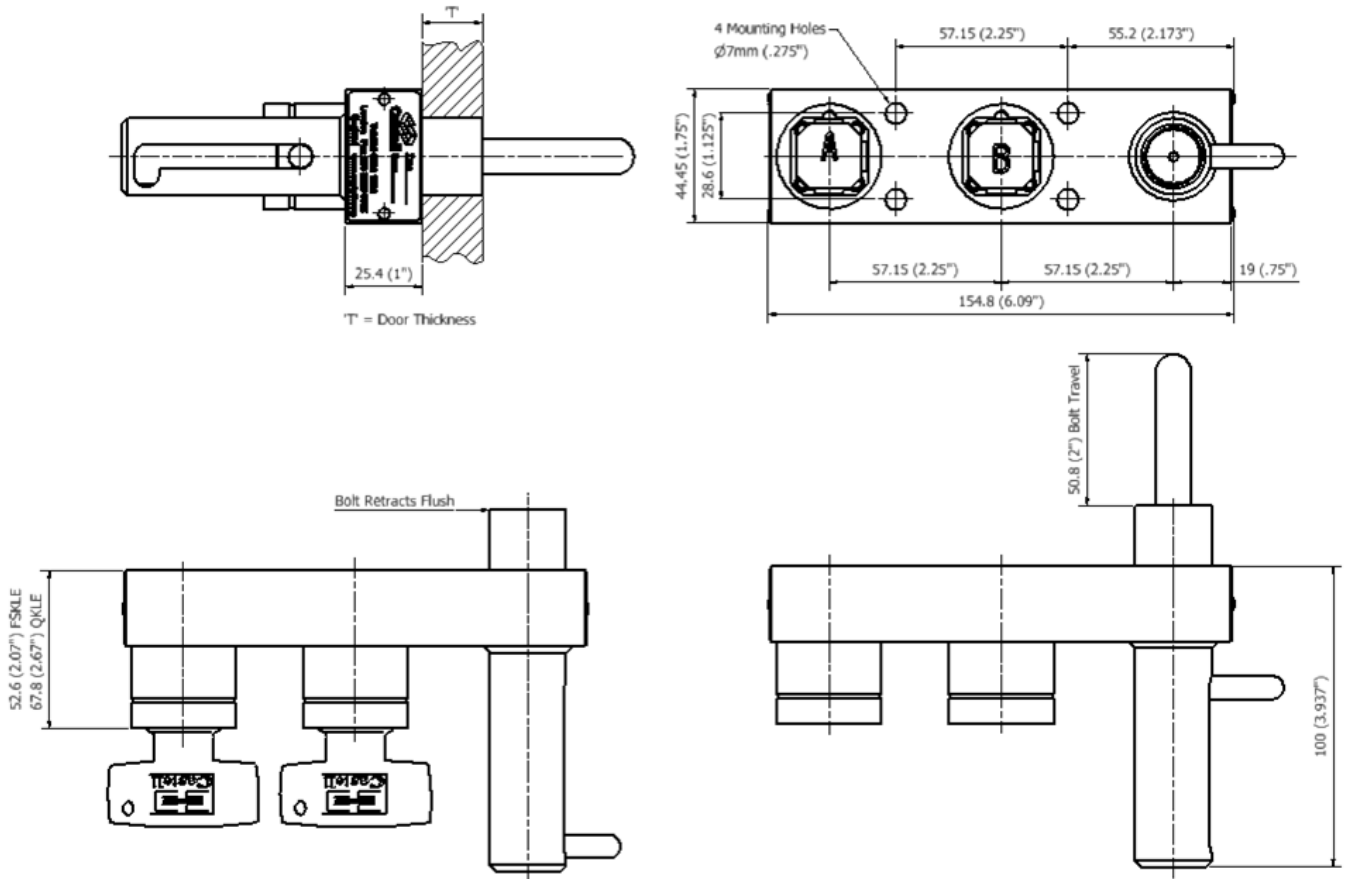
Mr T.C. Whelan  
Managing Director



### Drawing

Dimensions:  
in mm

*Note: For safe mounting, use security screws*

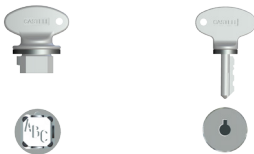


### Order Information

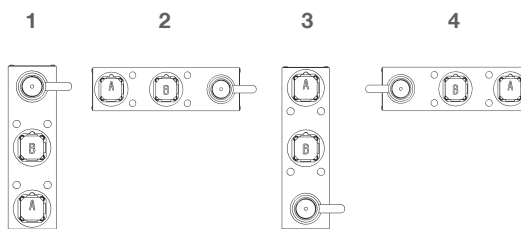
<b>Product Type</b>	<b>1</b>	<b>2</b>	<b>3</b>	<b>4</b>	<b>5</b>	<b>6</b>					
<b>Part Number</b>	KLE	-			-						
<b>Example</b>	KLE	-	FS	B	-	1	E	-	50,8	-	4
	<b>7</b>										
	9mm										
<b>8</b>	A	<b>Isolation Key Symbol</b> (exchange key condition)									
	OR										
<b>9</b>	B	<b>Personnel Key Symbol</b> (exchange key condition)									
	OR										
		<b>Primary Key Symbol</b> (double key condition)									
		<b>Secondary Key Symbol</b> (double key condition)									

<b>1</b>	<b>Lock portion type</b>	FS <sup>(1)</sup> / Q <sup>(1)</sup>
<b>2</b>	<b>Material</b>	B = Brass (standard)
<b>3</b>	<b>Number of secondary lock portions</b>	1 (standard)
<b>4</b>	<b>Key condition</b>	E = Exchange key condition / D = Double key condition (simultaneous removal of all keys)
<b>5</b>	<b>Bolt length</b>	50,8 mm (standard)
<b>6</b>	<b>Form</b>	1 / 2 / 3 / 4 <sup>(2)</sup>
<b>7</b>	<b>Door thickness</b>	please advise
<b>8</b>	<b>Lock portion symbol:</b> Isolation key (for exchange key condition) Primary key (for double key condition, located next to the bolt)	FS <sup>(1)</sup> up to 3 characters / Q <sup>(1)</sup> up to 6 characters
<b>9</b>	<b>Lock portion symbol:</b> Personnel key (for exchange key condition) Secondary key (for double key condition)	FS <sup>(1)</sup> up to 3 characters / Q <sup>(1)</sup> up to 6 characters

(1) **FS - lock type** Up to 3 symbols  
**Q - lock type** Up to 6 symbols



(2) **Form**



### Contact Information

Special construction available upon enquiry

Castell Safety International Ltd.  
The Castell Building  
217 Kingsbury Road  
London, England NW9 9PQ

Castell Safety International Ltd.  
Oskar-Jäger-Strasse 137  
50825 Köln  
Germany

Castell Interlocks Inc.  
Suite 800  
150 N Michigan Avenue,  
Chicago, Illinois 60601  
USA

Castell Safety China  
Building 1, No. 123,  
Lane 1165, Jindu Road,  
Minhang District,  
Shanghai 201108, China.

t: +44 (0) 20 8200 1200  
f: +44 (0) 20 8905 9378  
e: [uksales@castell.com](mailto:uksales@castell.com)

t: +49 (0) 221 1694 794  
f: +49 (0) 221 1694 795  
e: [vertrieb@castell.com](mailto:vertrieb@castell.com)

t: +1.312.360.1516  
f: +1.312.268.5174  
e: [ussales@castell.com](mailto:ussales@castell.com)

t: +86 21 61519023  
f: +86 21 61519030  
e: [chinasales@castell.com](mailto:chinasales@castell.com)

While every effort has been made to ensure the accuracy of the information provided, no liability can be taken for any errors or omission. Castell Safety International Limited reserves the right to alter specifications and introduce improvements without prior notice.